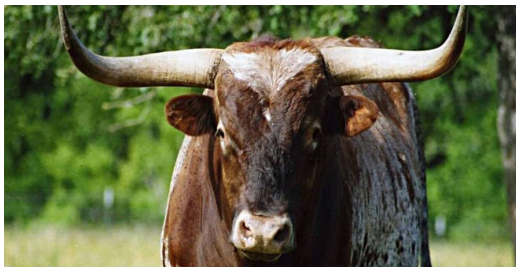
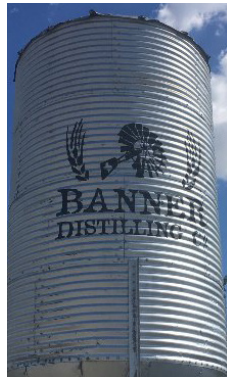


# MANOR



# CITY GUIDE



**HERITAGE TITLE COMPANY**  
AUSTIN, TEXAS

rollingwood | downtown | tarrytown  
[www.heritagetitleofaustin.com](http://www.heritagetitleofaustin.com)

# MANOR CITY GUIDE



## HISTORY & OVERVIEW

Located just 12 miles east of Austin along Highway 290, Manor offers residents the opportunity to be close to the city while enjoying a variety of affordable housing options. The city was founded in 1872 and was named after its postmaster James Manor. The city experienced growth in its early years because it was situated along the Houston and Texas Central Railway. Today, new subdivisions and commercial developments are sprouting up at every corner to meet the city's growth demands.



## EDUCATION

Manor ISD serves students in K-12th grades and offers several learning platforms to engage students. The district has implemented innovative learning opportunities for students that include: New Tech, Fine Arts, International Baccalaureate, Manor Early College High School, AVID and Manor Elementary Early Learning Center.



## MAJOR BUSINESS INDUSTRIES

The largest industries in Manor are health care, social assistance and public administration. Some of the major employers include Austin Regional Clinic, Baylor Scott & White, Bluebonnet Electric Cooperative and Atmos Energy.



## ARTS & CULTURE

Looking for a family friendly activity? The J. Lorraine Ghost Town is a wild west adventure not to be missed. The venue hosts music, film and live entertainment events while also serving some of the best burgers around.



## DINING

Residents of Manor can make a short drive to Austin to enjoy all the amazing dining options that Austin has to offer. The good news is they can also dine at top notch local favorites including Goodluck Grill, Maxine's Gumbo House, Café 290 and the Cele Store.



## WINERIES, BREWERIES AND PUBS

Banner Distilling Company is a local favorite situated on 12 acres in the outskirts of East Austin. Residents can also take advantage of visiting the various vineyards and distilleries in Austin and the Texas Hill Country.



## PARKS AND OUTDOORS

The town of Manor has top outdoor attractions like Jennie Lane Park, ShadowGlen Golf Club, White Fences Equestrian Center, Crowe's Nest Farm, Greenbury Village Park, Carriage Hills Park and Bell Farms Park.



## FESTIVALS

Manor Market Days are a fun way to spend the day with shopping, artisans, a farmer's market, music and so much more. The town also hosts Heritage Fest in downtown Manor with live entertainment, arts and crafts and food vendors.



## NEIGHBORHOODS

Referred to as Austin's eastern frontier, Manor is exploding with economic growth and development. Many people who work in Austin live in Manor because of the more affordable housing options. Some of the notable neighborhoods include Whisper Valley, Briarcreek, Shadow Glen, Carriage Hills, Decker Creek, Greenbury, Hamilton Point, Littig Ranches, New Katy, Presidential Glen, Stonewater and Timmerman Park.



**for more information visit:  
[www.cityofmanor.org](http://www.cityofmanor.org)**

---